



PUMP & CONVEY



www.ConcretePlacementinc.com

PUMP

Reach where other
booms simply cannot



EXPERIENCE

Experienced in the concrete placing industry since 1988, Marla Fleming established CPI in 2009 – a minority women's business with a new name, bold colors and a solid commitment to customer service.

SERVICE & SUPPORT

Our modern fleet and emphasis on equipment maintenance ensures reliable performance; and our operators are OSHA-10 and American Concrete Pumping Association certified to provide a smooth pumping job.

BOOM PUMPS AND TELEBELT® CONVEYORS

Our fleet features a wide range of concrete boom pump sizes, with many models featuring a Multi-Z boom to reach difficult-to-reach spots. Plus, we offer the highly versatile Telebelt conveyor, which provides up to 6 cubic yards a minute output and handles concrete from 0" to 12" slump. This conveyor saves time and labor, as it sets up and operates under low heights, reaches long distances and quickly places multiple materials, from sand to 4" rock.



CONVEY

Place sand to rock, tough-to-pump concrete



WIDE VARIETY OF MODELS TO EASILY HANDLE
BOTH LARGE AND SMALL JOBS

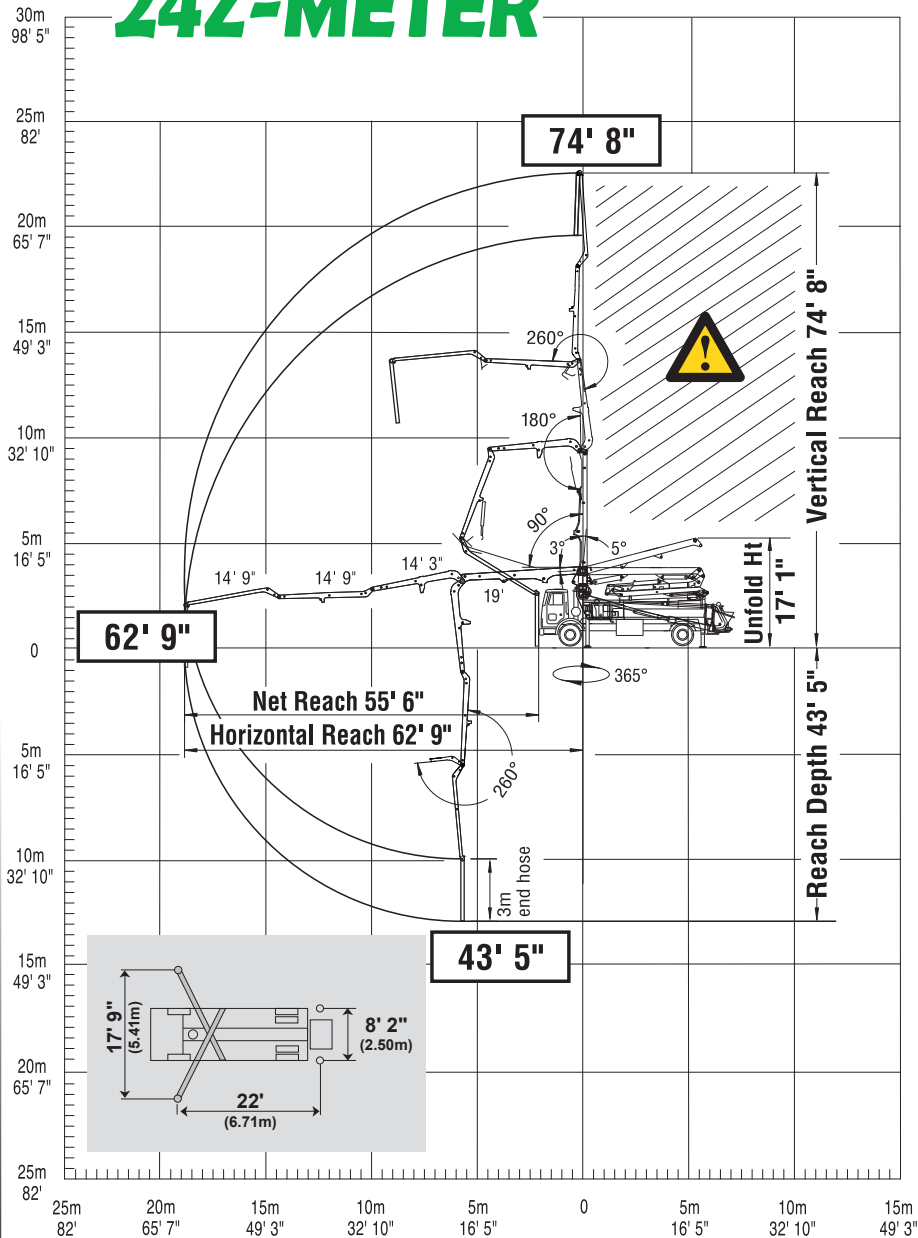


Serving...all of Southern California from our Tustin headquarters,
plus Southwest Texas and parts of New Mexico from our El Paso location.

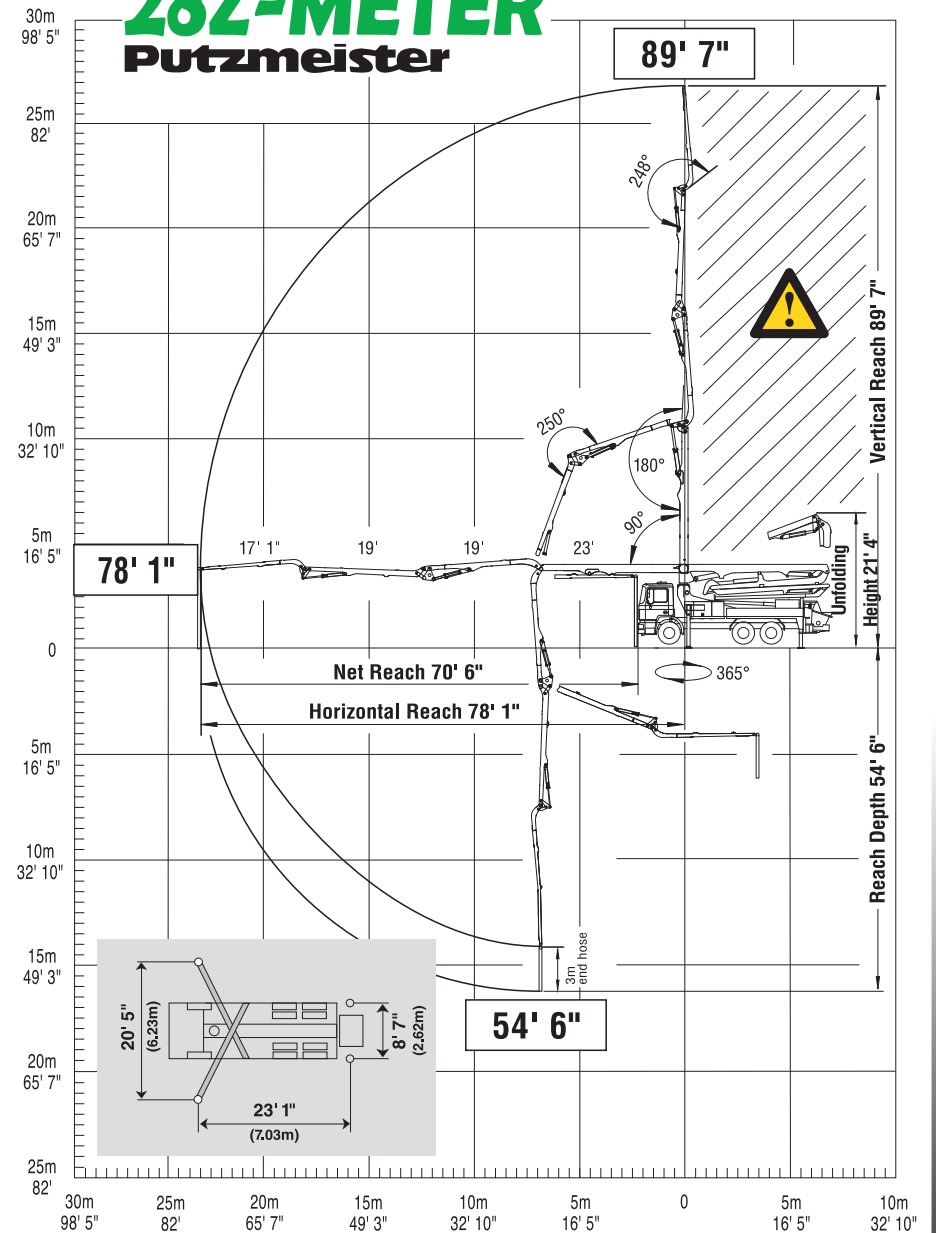
 facebook.com/CPI.ConcretePlacement

Specs subject to change without notice.

24Z-METER

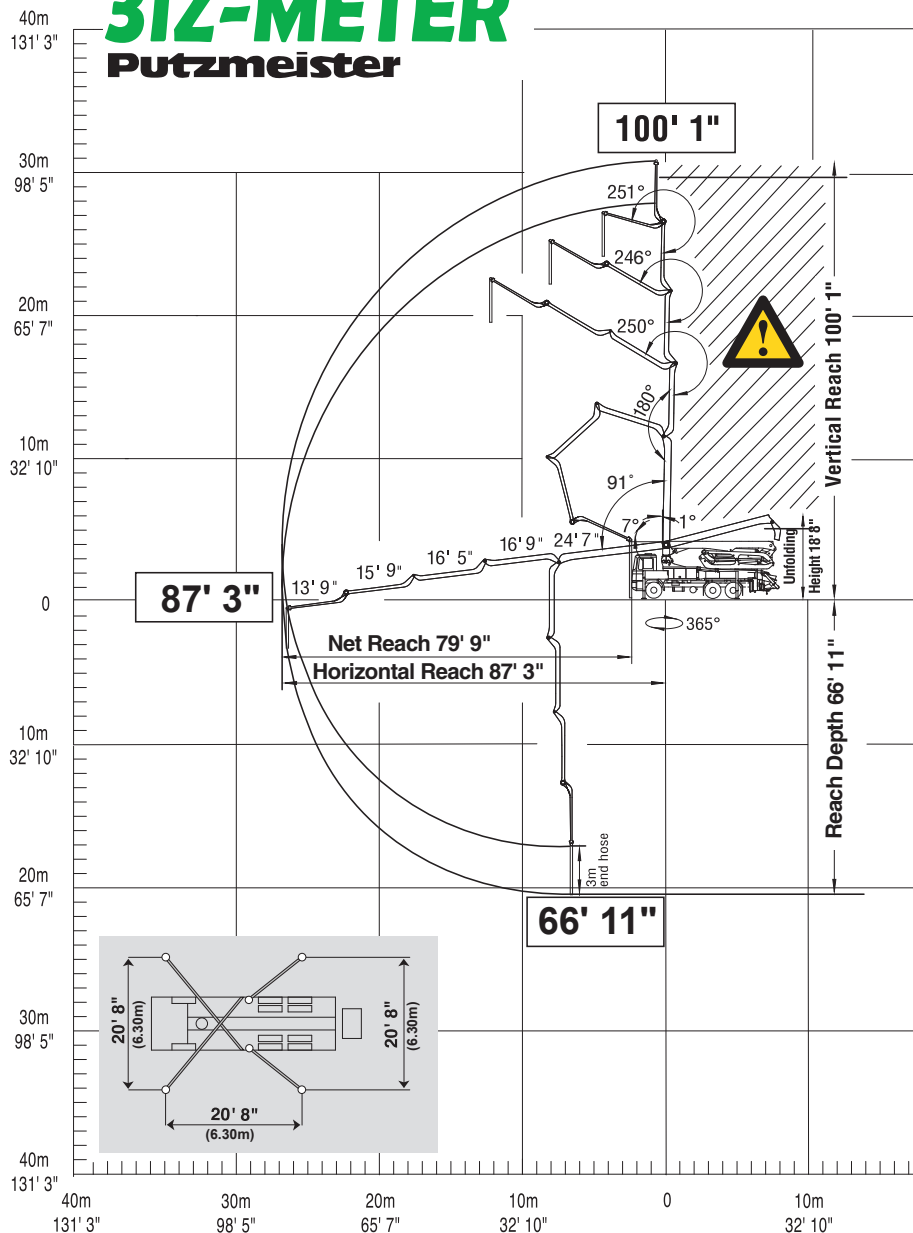


28Z-METER Putzmeister



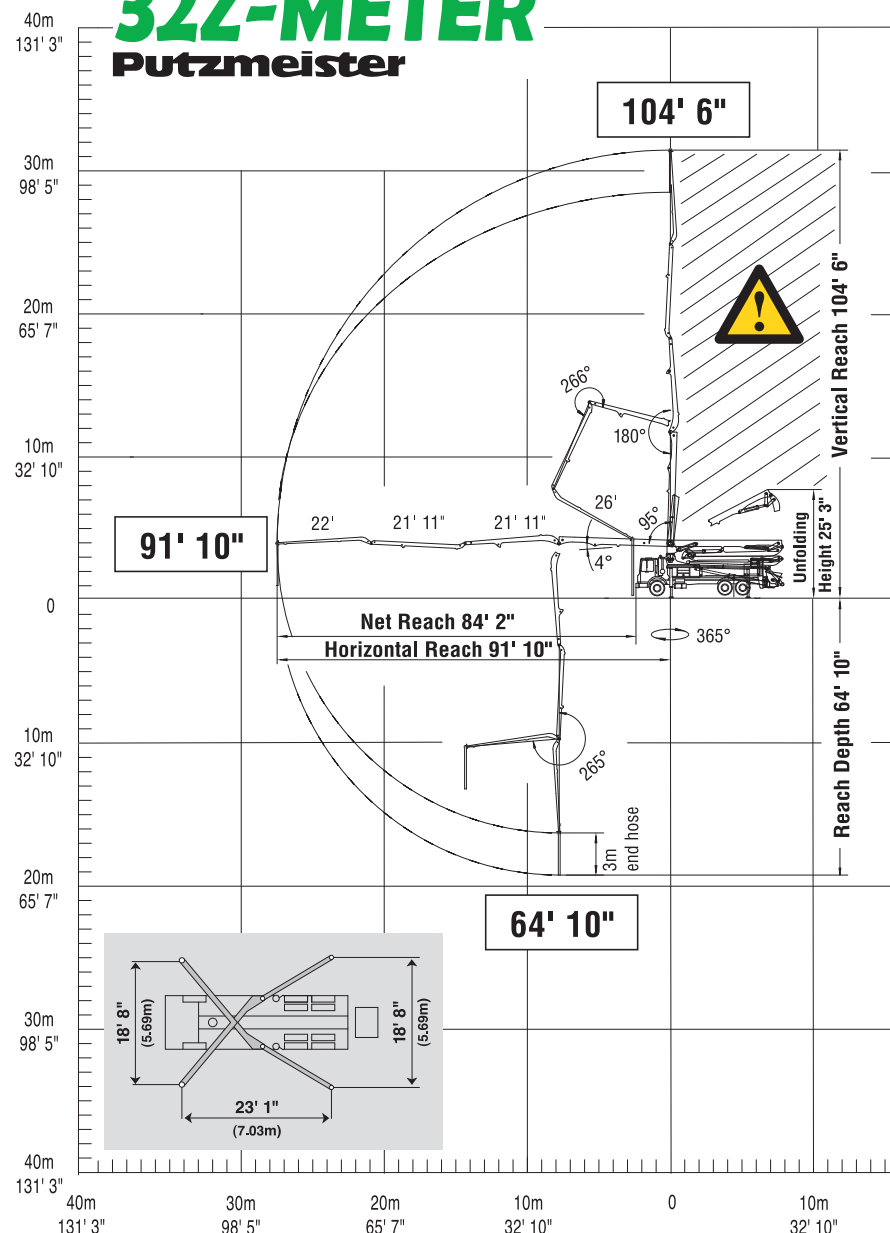
31Z-METER

Putzmeister



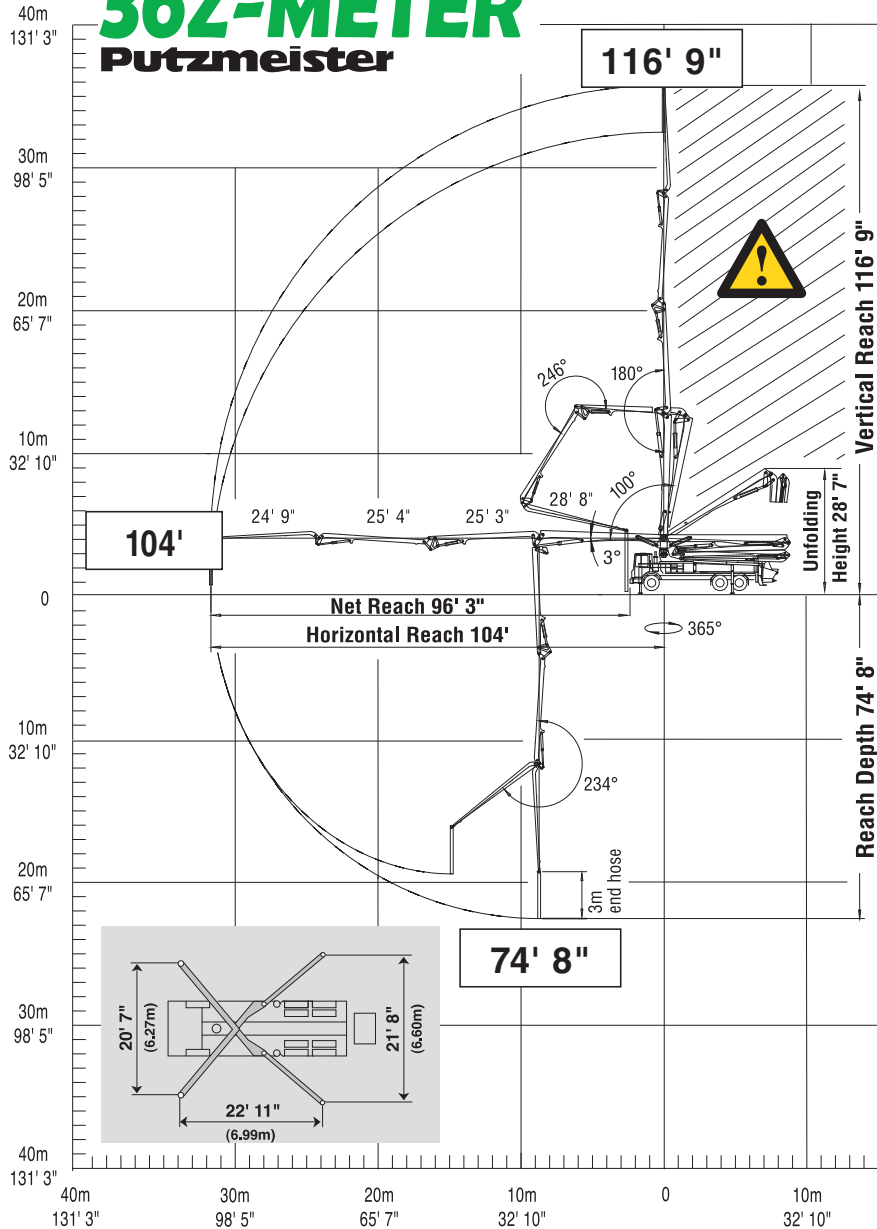
32Z-METER

Putzmeister



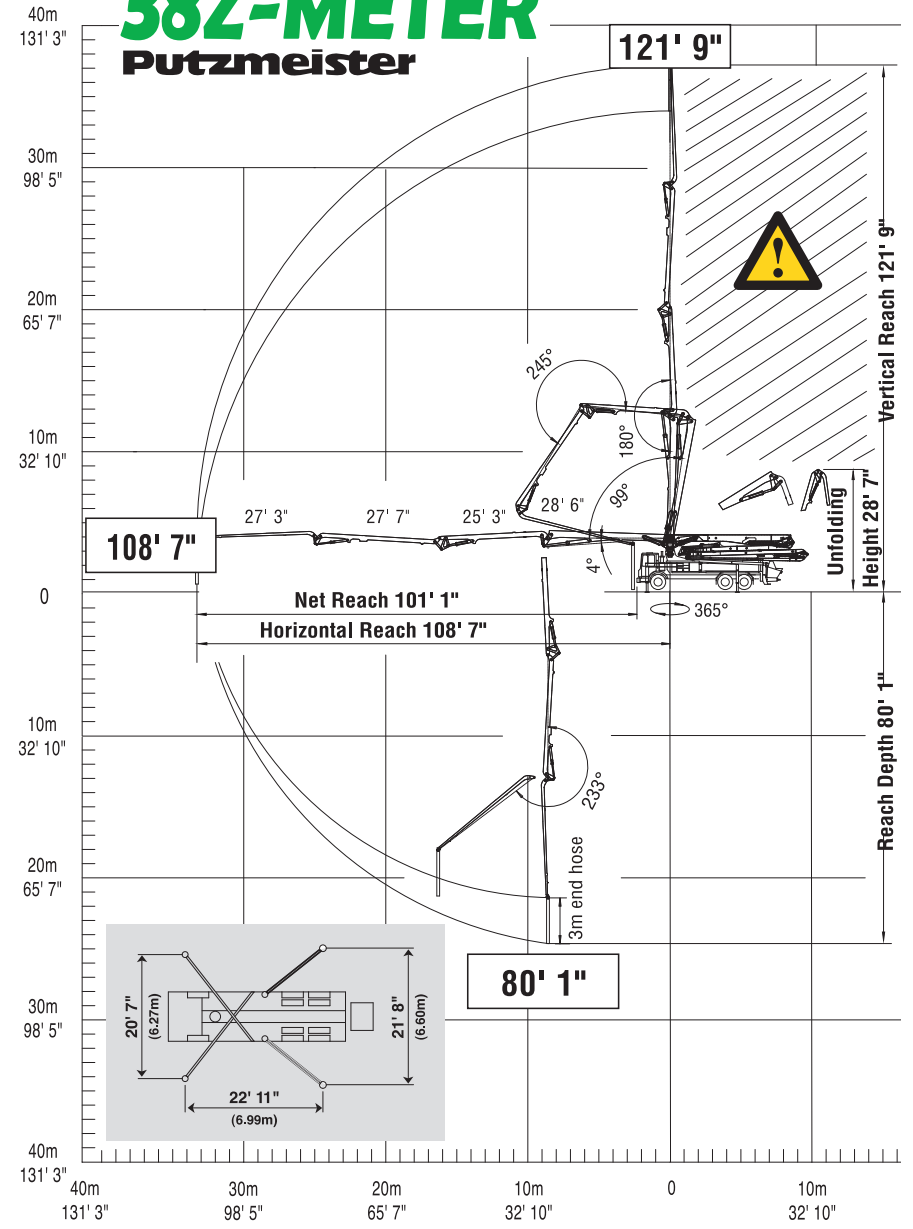
36Z-METER

Putzmeister



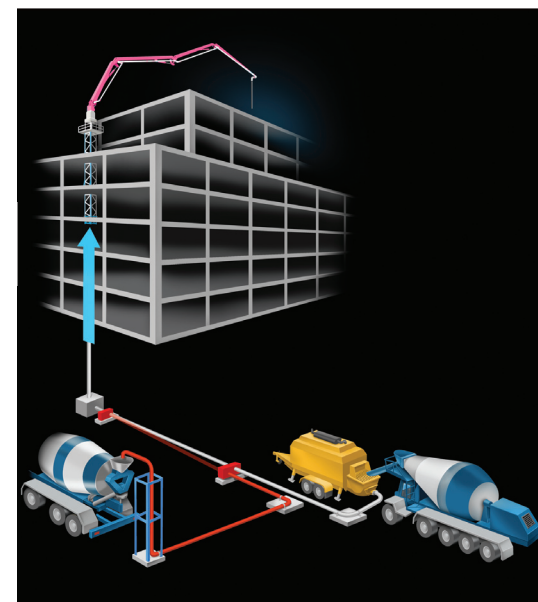
38Z-METER

Putzmeister



SPECIFICATIONS

| MODEL | REACH | | UNFOLD | OUTRIGGERS | |
|-------------------------------|----------------|-------------|---------|--------------|-------------|
| | VERTICAL REACH | HORIZ REACH | | FRONT SPREAD | REAR SPREAD |
| 24Z-METER | 78' 1" | 65' 8" | 22' 8" | 13' 2" | 7' 7" |
| 28Z-METER | 89' 7" | 78' 1" | 21' 4" | 20' 5" | 8' 7" |
| 31Z-METER | 100' 1" | 87' 3" | 18' 8" | 20' 8" | 20' 8" |
| 32Z-METER | 104' 6" | 91' 10" | 25' 3" | 18' 8" | 18' 8" |
| 36Z-METER | 116' 9" | 104' 0" | 28' 7" | 20' 7" | 21' 8" |
| 38Z-METER WITH DETACH BOOM | 121' 9" | 108' 7" | 28' 7" | 20' 7" | 21' 8" |
| 42-METER | 137' 10" | 124' 6" | 32' 10" | 27' 11" | 26' 3" |
| 46X-METER | 148' 4" | 136' 2" | 40' 4" | 26' 3" | 29' 6" |
| 52Z-METER | 169' 7" | 157' 6" | 33' 2" | 33' 4" | 33' 4" |
| 58-METER | 188' 1" | 174' 3" | 52' 2" | 33' 7" | 34' 0" |
| TELEBELT® TB 105 | 90' at 30° | 105' 0" | 16' 0" | 24' 2" | 25' 2" |



42-METER

Diagram illustrating the reach and depth capabilities of the 42-METER telescopic boom lift. The diagram shows the lift extended horizontally and vertically, with various reach and depth measurements provided in feet and inches.

Reach Measurements:

- Horizontal Reach:** 124' 6"
- Net Reach:** 115' 9"
- Vertical Reach:** 137' 10"
- Reach Depth:** 92' 9"

Other Dimensions and Features:

- Unfold Ht:** 32' 10"
- 3m end hose**
- Angles:** 255°, 180°, 180°, 99°, 6°, 3°, 365°
- Warning:** A yellow triangle with an exclamation mark indicates a warning area.
- Inset Diagram:** A detailed view of the lift's base and boom structure, showing dimensions: 27' 11" (8.50m) and 26' 3" (8.00m).



46X-METER
Putzmeister

148' 4"

136' 2"

Net Reach 127' 0"
Horizontal Reach 136' 2"

Vertical Reach 148' 4"

Unfold Ht 40' 4"

Reach Depth 108' 3"

108' 3"

26' 3" (8.00m)
29' 6" (8.99m)

36' 9"
37' 1"
37' 0"
25' 0"
3m end hose

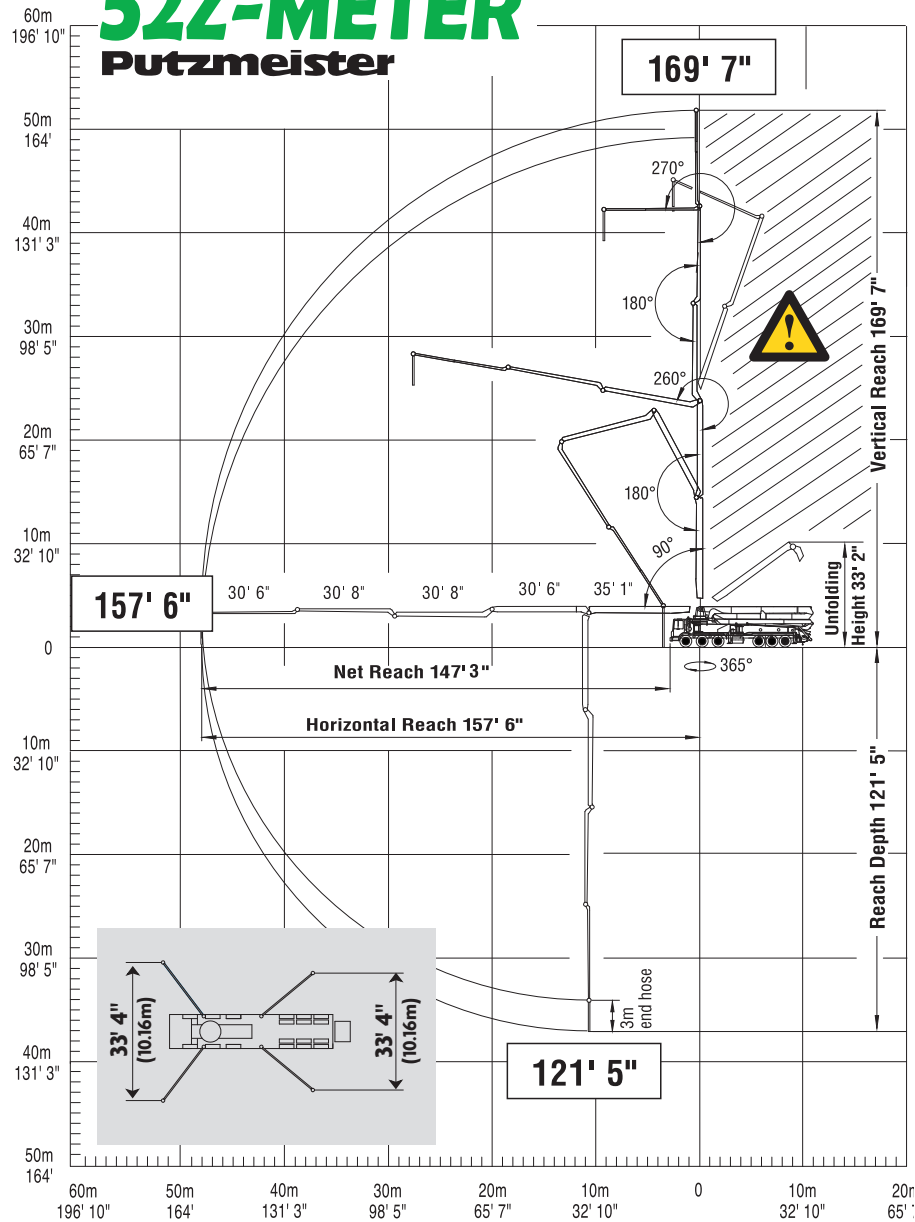
180°
177°
170°
213°
365°

Warning Symbol



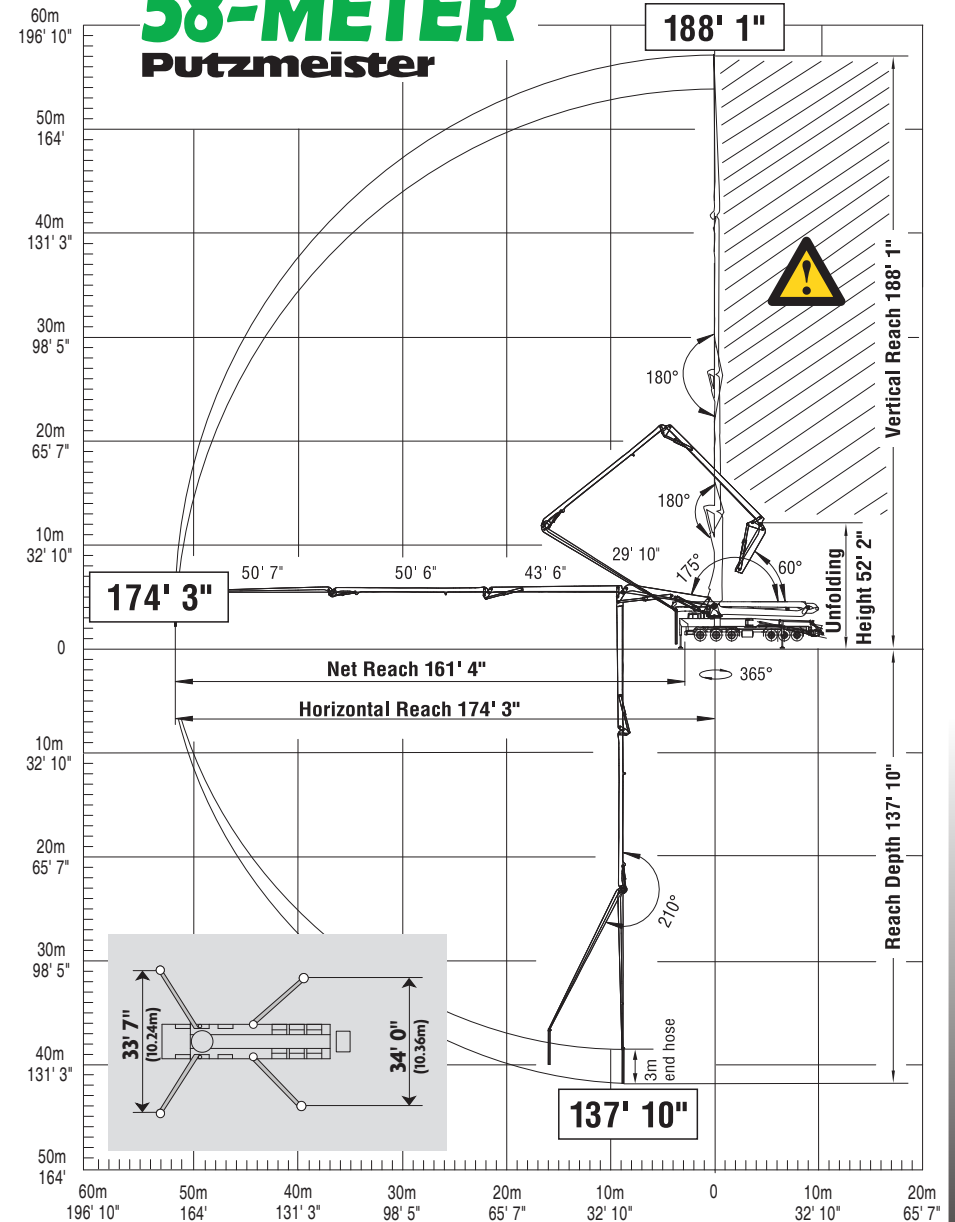
52Z-METER

Putzmeister



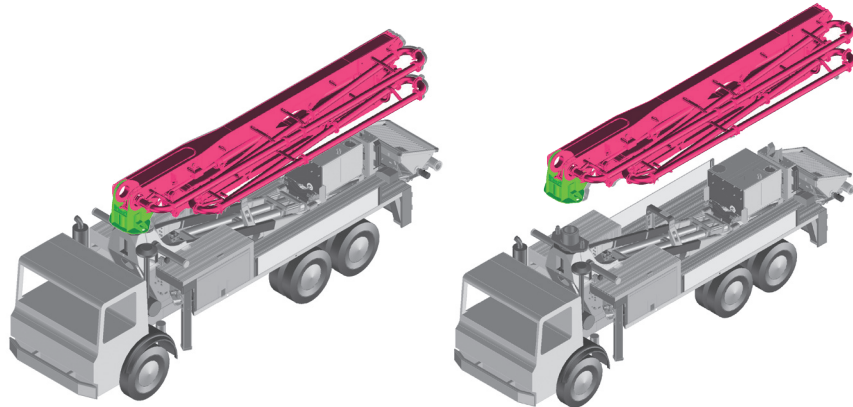
58-METER

Putzmeister



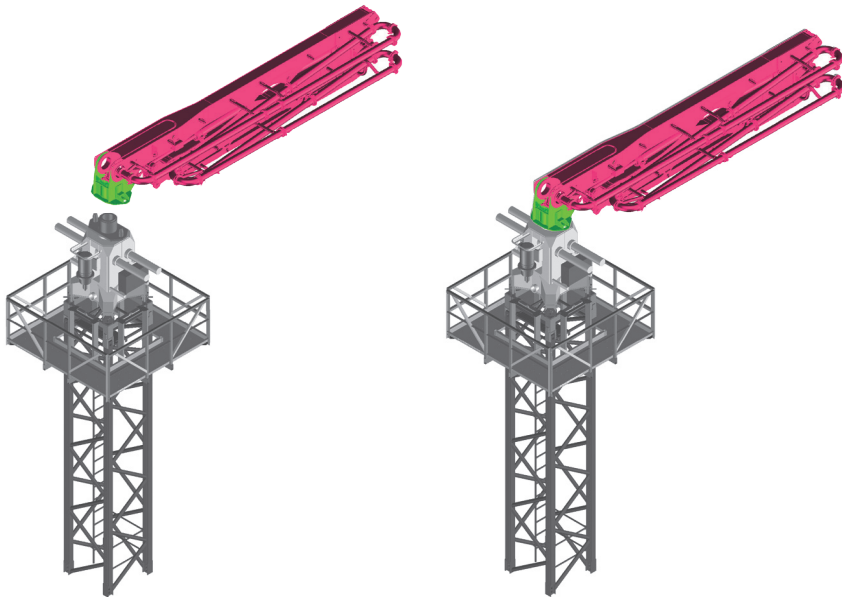
38Z-METER DETACHABLE PLACING BOOM

Putzmeister



1. Detach boom and connect crane cables.

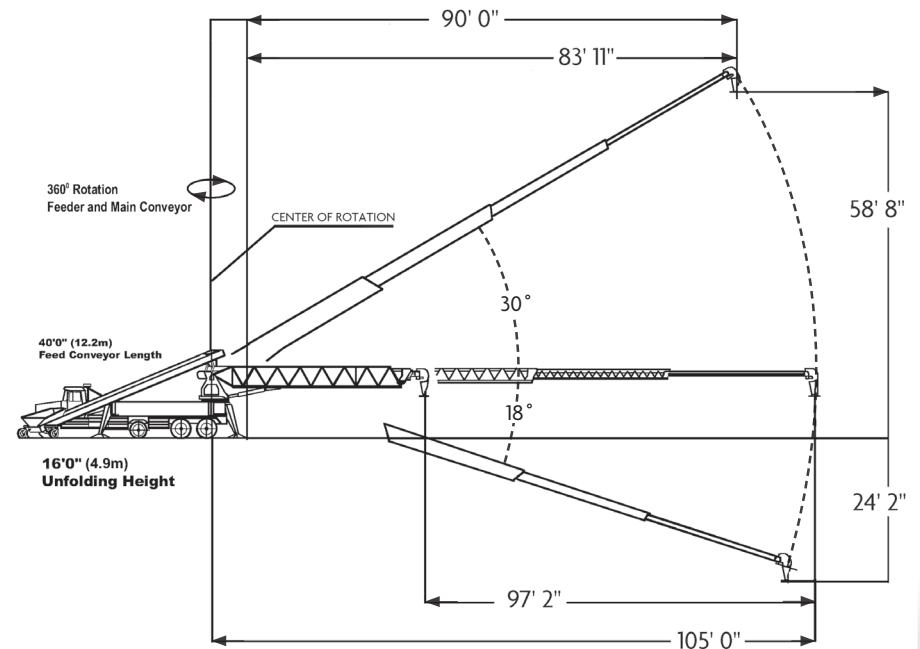
2. Lift.



3. Position and connect pins.

4. Unfold and Pump.
108' 7" Horizontal Reach

TELEBELT® TB 105 Putzmeister



SPECIFICATIONS: TELEBELT TB 105

Horizontal reach:

105' 0" maximum at 0°
90' 0" maximum at 30°

Discharge height from grade:

58' 8" maximum at 30°
-24' 2" maximum at -18°

Outrigger spread:

Front 24' 2"
Rear 25' 2"

Output:

6 yd³/min max theo output at 0°
Conveys up to 4" aggregate

General specs:

18" belt - feed and main conveyor
40' 0" independent feed conveyor
360° continuous hydraulic rotation of feed and main conveyors

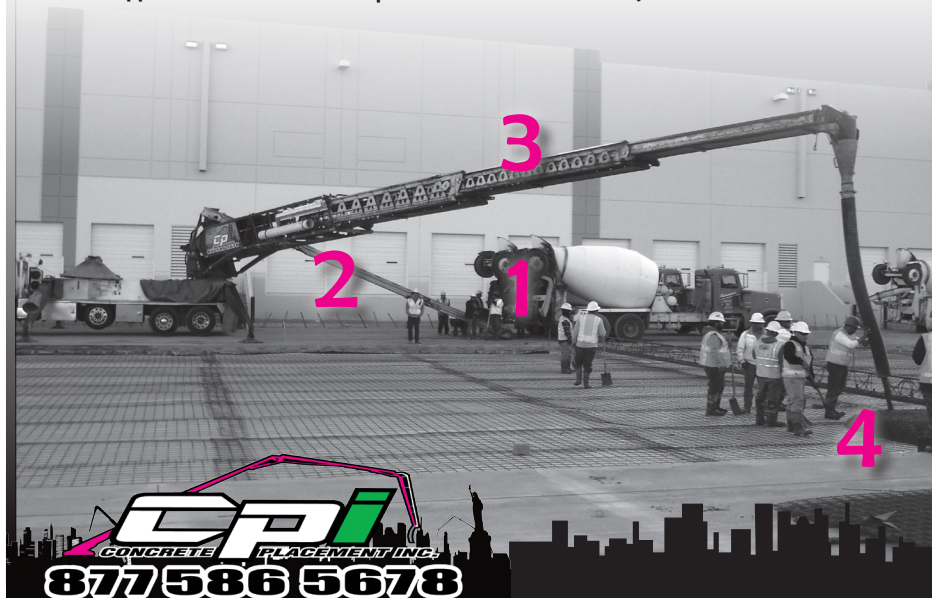


Putzmeister TELEBELTS® Place Concrete...



Conveying concrete and materials is fast and efficient.

- 1.** Concrete or materials can be quickly discharged into the hopper.
- 2.** Aggregate travels up feeder belt, which can be rotated/moved for effective setup.
- 3.** Material flows onto main conveyor belt, which telescopes out 105 foot horizontally.
- 4.** Aggregate is easily placed with pinpoint precision from end hose.



and Multiple Materials



Telebelts place a wide variety of materials to handle several applications with speed and precision.

Place tough and unpumpable concrete from 0" to 12" slump. Plus, convey any flowable material from sand to 4" rock.



Typical and Pervious Concrete



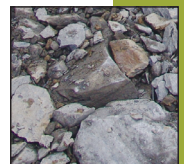
Roller-Compacted Concrete (RCC)



Sand



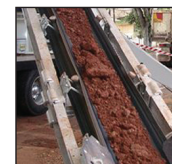
Gravel



Rock



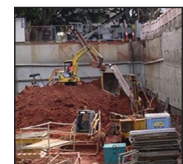
Wood



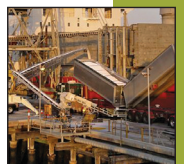
Soil



Bagged Materials



Excavated Material



Fertilizer



CALIFORNIA-CERTIFIED
SMALL BUSINESS
ENTERPRISE



Putzmeister

HIGH PERFORMANCE CONCRETE
PUMPS & TELEBELTS®

Our impressive
58-Meter (shown)
reaches vertical heights
up to 188 feet. Plus,
Putzmeister's Multi-Z
boom on most of our
boom pumps allows
reach into tight spots
where other booms
simply cannot access.

Concrete Placement, Inc.

P.O. Box 1337 | Tustin, CA 92781 | 877-586-5678

facebook.com/CPI.ConcretePlacement