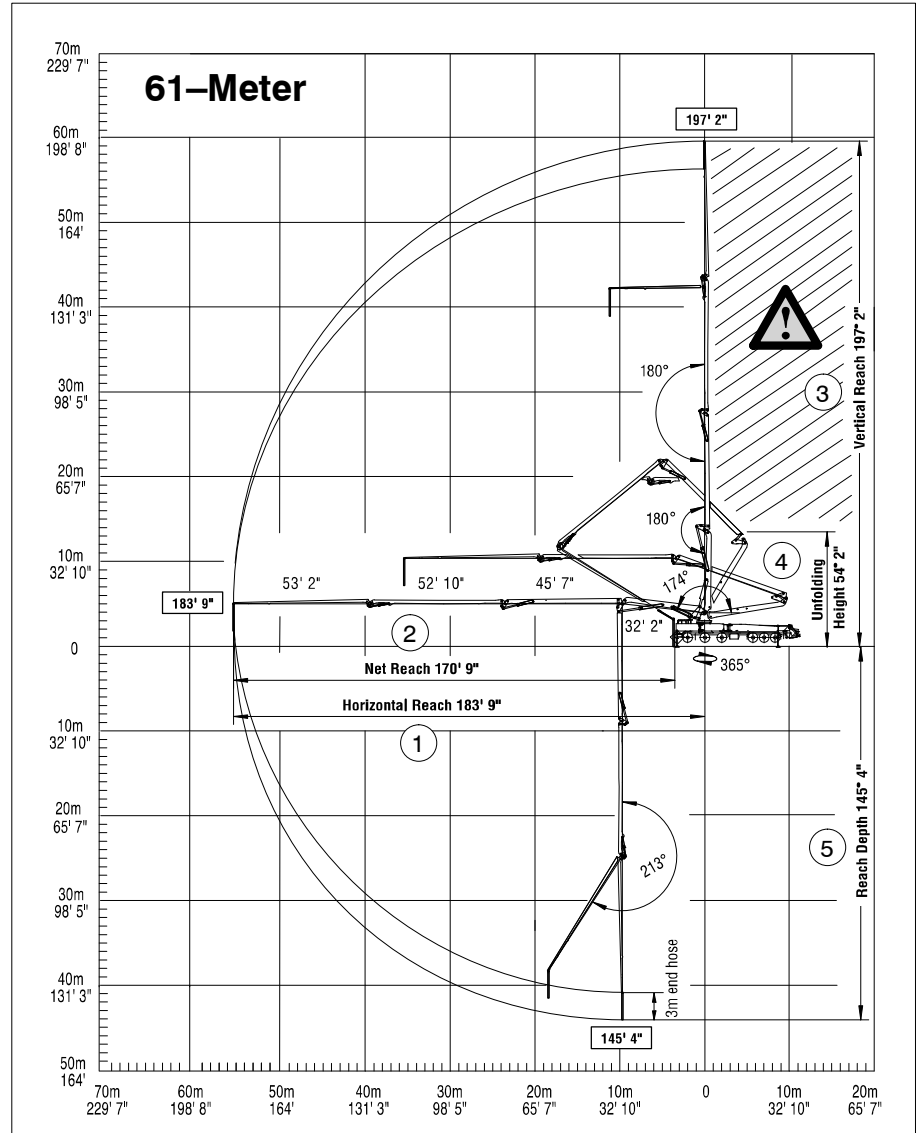


3.5.1 Reaches

The 61M-4 has the reaches listed below.



1	Horizontal reach from middle of slewing head	183' 9" (56.01 m)
2	Horizontal reach from front edge of truck	170' 9" (52.05 m)
3	Vertical reach	197' 2" (60.10 m)
4	Unfolding height	54' 2" (16.52 m)
5	Depth of reach with 3 m end hose	145' 4" (44.3 m)